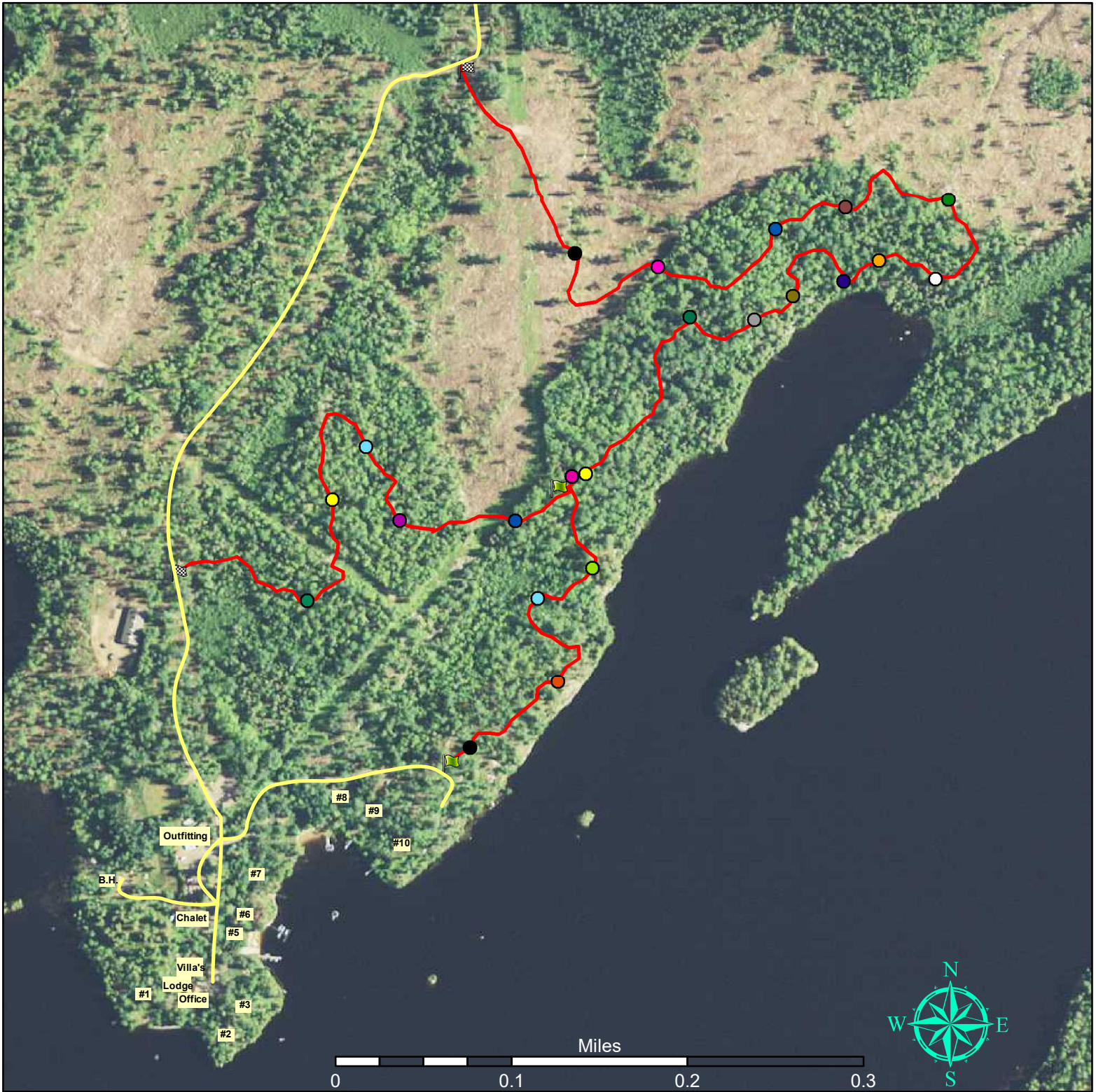


Trail of Reflections Guide



<ul style="list-style-type: none"> Start of Trail Reservoir of Life Fire's Rebirth Wetland Wonder BWCA 4 Miles 	<ul style="list-style-type: none"> Changing Forest Ice Age Drop Out Towering Timbers Earth's Upheaval Grouse Ridge 	<p style="text-align: center;">Legend</p> <ul style="list-style-type: none"> Leech Locker Mallard Bay Buck Run Moose Crossing 	<ul style="list-style-type: none"> Confusing Conifers Opening to New Horizons Eagle Roost End of Trail 	<ul style="list-style-type: none"> Jackpine Loop Start Fox Trot Maple Syrup Functional Flora Field Guide Work Out 	<ul style="list-style-type: none"> Norway Haven South Jackpine Loop End South Jackpine Loop Trail of Reflection Gravel Road
--	--	--	--	---	---

NOTE: If you become lost on the trail, STOP!
look for **ORANGE** trail tape on nearby trees.

Trail of Reflections = 1.1 Miles
Jackpine Trail Loop = 1 Mile



Created by:
MN-DNR Quicklayers
ARC Maps
Randy Paquay

(Start of Trail to Outfitting Building)
Trail of Reflections = 1.6 Miles
Jackpine Trail Loop = 1.2 Miles